

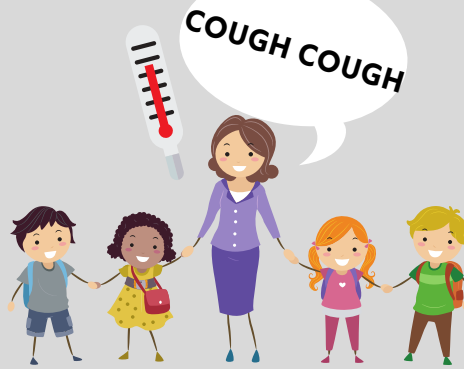
CORONAVIRUS: WHAT HAPPENS IN CASE OF A SUSPECTED INFECTION?

SOMEONE IN A PUBLIC SPACE MIGHT BE INFECTED?

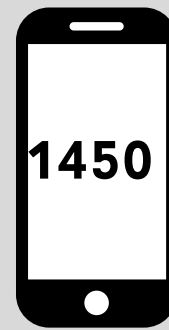
HERE'S WHAT HAPPENS NEXT:



A PERSON DISPLAYS SYMPTOMS THAT COULD BE CAUSED BY THE VIRUS.



THE AFFECTED PERSON NEEDS TO BE PHYSICALLY SEPARATED FROM OTHERS. NEXT: CALL HEALTH SERVICES UNDER 1450.



SYMPTOMS?
RECENT TRAVELS?
CONTACTS?

BEFORE CALLING:
PLEASE ORGANISE A
GERMAN-SPEAKER TO
TRANSLATE

YOUR CALL WITH 1450: HEALTHCARE WORKERS GAUGE WHETHER THERE ARE GROUNDS FOR FURTHER INVESTIGATIONS.



A SWAB TEST IS CARRIED OUT.



WHILE THE SAMPLE IS BEING TESTED, FURTHER CONTACTS ARE ASSESSED: WITH WHOM DID THEY HAVE CONTACT?

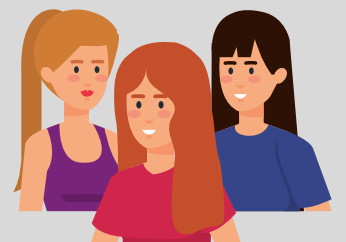


CLOSE CONTACT:



IF THE TEST COMES BACK POSITIVE: CONTACTED BY HEALTH AUTHORITIES AND ORDERED TO SELF-ISOLATE FOR TWO WEEKS.

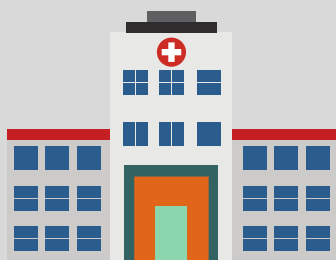
LOOSE CONTACT:



IF INFECTION IS CONFIRMED:



OR:



SELF-MONITORING RECOMMENDED, FURTHER MEASURES AS COMMUNICATED BY THE HEALTH AUTHORITIES.



ÖSTERREICHISCHES ROTES KREUZ

Aus Liebe zum Menschen.