

# CORONAVIRUS: WHAT HAPPENS IN CASE OF A SUSPECTED INFECTION?

AN EMPLOYEE SUSPECTS THEY MIGHT BE INFECTED?  
HERE'S WHAT HAPPENS NEXT:

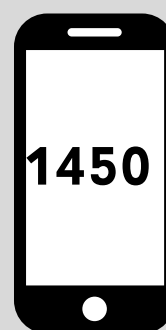
AT HOME OR  
AT THE WORKPLACE



COUGHING, A  
FEVER, RESPIRATORY  
PROBLEMS: AN INFECTION  
WITH THE CORONAVIRUS IS  
SUSPECTED.



IF AT WORK: GO HOME  
IMMEDIATELY. NEXT: CALL  
HEALTH SERVICES UNDER 1450.



SYMPTOMS?  
RECENT TRAVELS?  
CONTACTS?

BEFORE CALLING:  
PLEASE ORGANISE A  
GERMAN-SPEAKER TO  
TRANSLATE

YOUR CALL WITH 1450: HEALTHCARE  
WORKERS GAUGE WHETHER THERE ARE  
GROUNDS FOR FURTHER  
INVESTIGATIONS.



A SWAB TEST IS CARRIED OUT.  
INFORM YOUR EMPLOYER.



WHILE THE SAMPLE IS BEING TESTED, FURTHER  
CONTACTS ARE ASSESSED: WITH WHOM DID  
YOU HAVE CONTACT?



**CLOSE CONTACT:**



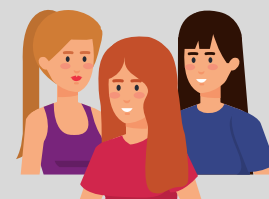
IF THE TEST COMES BACK POSITIVE:  
CONTACTED BY HEALTH AUTHORITIES AND  
ORDERED TO SELF-ISOLATE FOR TWO WEEKS.  
EMPLOYERS NEED TO BE INFORMED BY THE  
AFFECTED PERSONS THEMSELVES.

**IF INFECTION IS CONFIRMED:**



A QUARANTINE ORDER IS ISSUED BY THE  
HEALTH AUTHORITIES. EMPLOYERS NEED TO  
BE INFORMED BY THE AFFECTED PERSONS  
THEMSELVES.

**LOOSE CONTACT:**



SELF-MONITORING RECOMMENDED,  
FURTHER MEASURES AS COMMUNICATED BY  
THE HEALTH AUTHORITIES. ASK EMPLOYERS  
ABOUT POSSIBILITY OF TELEWORKING.



ÖSTERREICHISCHES ROTES KREUZ

*Aus Liebe zum Menschen.*