

# PSYCHOSOCIAL INTERVENTION EARTHQUAKE CHILE 2010

INTERNATIONAL GROUP FOR THE  
PSYCHOSOCIAL SUPPORT

Cada vez más cerca de las personas



PSYCHOSOCIAL INTERVENTION CHILE 2010

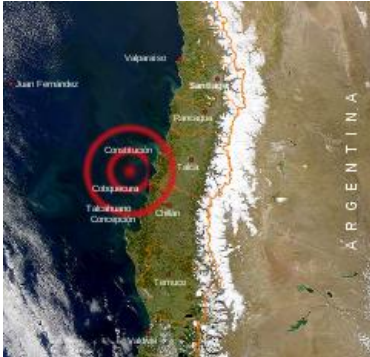
Chile is divided in 12 different  
regions from North to South.



Cada vez más cerca de las personas



**Saturday 27<sup>th</sup> February 2010, 03:34**



- Magnitude 8,8
- Epicentre in Chilean Sea, in front of Curanipé and Cobquecura, about 150 km from Concepción, and 47,4 km from the earth's crust.
- It lasted around 2' 60''
- 521 deads, 56 missing
- One of the biggest earthquake of History.

Cada vez más cerca de las personas



**SPANISH RED CROSS RESPONSE**

| Emergency Response Unit (ERU)                         | Components |
|---|------------|
| Health  | 14         |
| Logistics   | 5          |
| Group for the International Psychosocial Intervention | 10         |

Cada vez más cerca de las personas



## SPANISH RED CROSS RESPONSE

|  |  |
|--|--|
| <b>Arrival in Santiago</b>             | <b>6 March 2010</b>  |
| <b>Psychosocial intervention areas</b> | <p><b>Maule</b> (VII Región): Talca</p> <p><b>Bío-Bío</b> (VIII Región): Concepción</p> <p>Health Basic Care Unit (UCBS): <b>Hualañé</b></p> <p><b>Santiago de Chile</b></p> |

Cada vez más cerca de las personas



**Cruz Roja Española**

## INTERNATIONAL PSYCHOSOCIAL INTERVENTION GROUP

- Created in 2009
- Supported by the experience of the Emergencies Immediate Intervention Teams (ERIE´s) for the psychosocial intervention and by interventions in other countries (Paraguay, Perú)
- Interventions during 2010: Haití (República Dominicana), Chile.

Cada vez más cerca de las personas



**Cruz Roja Española**

## INTERNATIONAL PSYCHOSOCIAL INTERVENTION GROUP

---

-During the intervention in Chile 2473 persons were attended.

-In this intervention there was a collaboration with the National Societies from Colombia, Ecuador and Uruguay.

-Two people responsible for the psychosocial project in Chile assisted to the 2010 training for the international psychosocial intervention group.

Cada vez más cerca de las personas



Cruz Roja Española

## INTERVENTION OBJECTIVES

---

### GENERAL

Contribute to the reduction of the vulnerability on the population affected by the earthquake through psychosocial support based on the community, encouraging a resilient attitude.

### ESPECIFIC

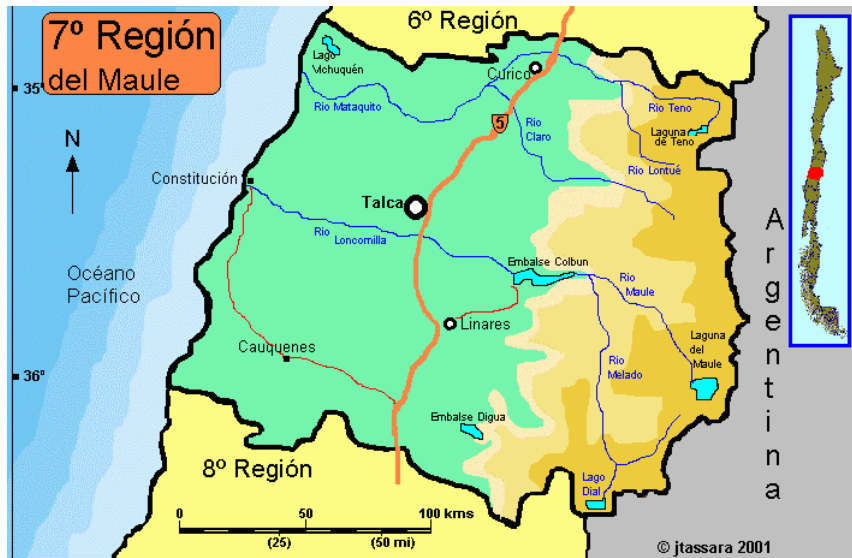
Strengthen the capacities of the Chilean Red Cross on the psychosocial intervention field to encourage competences, skills and attitudes of resilience and protection in the community.

Cada vez más cerca de las personas



Cruz Roja Española

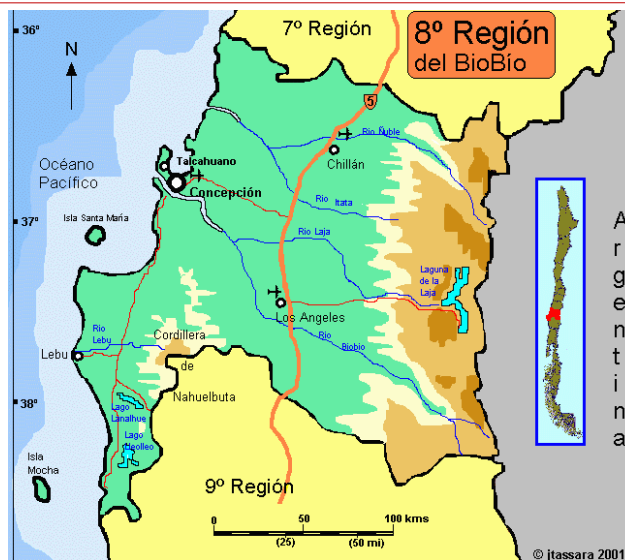
INTERVENTION AREAS



Cada vez más cerca de las personas



INTERVENTION AREAS



Cada vez más cerca de las personas



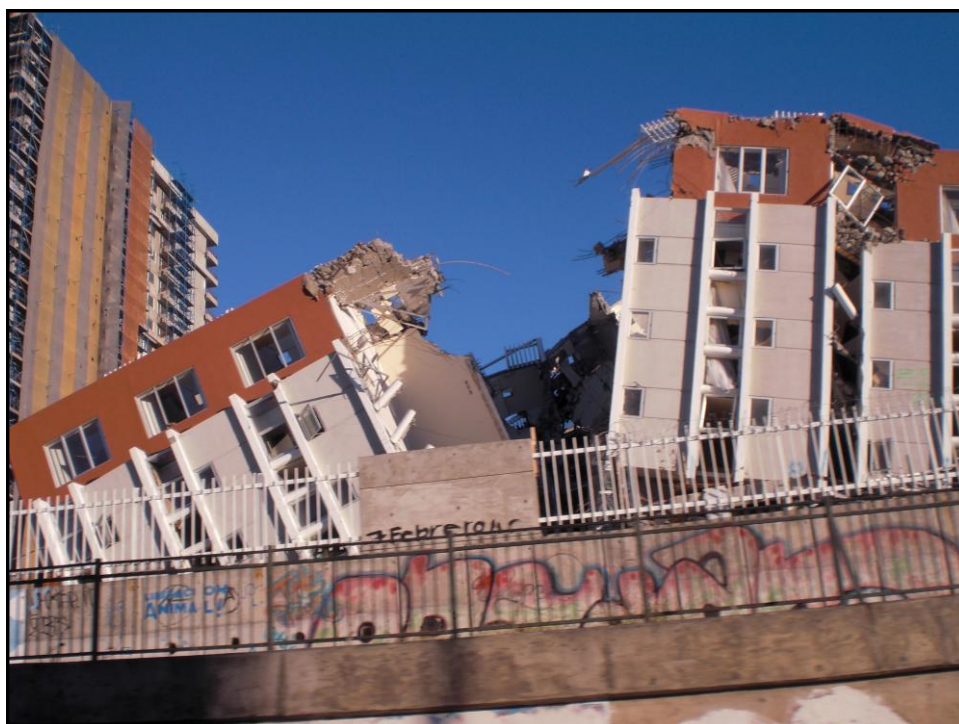
# EARTHQUAKE IMPACT ON CHILE

A punch of images

Cada vez más cerca de las personas



Cruz Roja Española



## INITIAL EVALUATION OF THE COMUNITIES PSYCHOSOCIAL NEEDS

Meetings with the local Red Cross offices,  
representants of the authorities and  
leaders of the shelters.

Cada vez más cerca de las personas



Cruz Roja Española

## PLANNING ACTIVITIES

Setting the schedule, time-table and specific  
objectives on every area of intervention.

All the activities were done in colaboration with  
the Chilean Red Cross.

Cada vez más cerca de las personas



Cruz Roja Española

## **PROMOTION OF THE COMMUNITY SELF-SUPPORT**

**Encouragement of the capacities through meetings  
with leaders and other community members,  
highlighting the population resilience.**

**Group intervention.**

**Training for parents**

Cada vez más cerca de las personas



**Cruz Roja Española**

## **INTERVENTIONS WITH CHILDREN**

**Give a space to the children to express  
emotions and face fears.**

Cada vez más cerca de las personas



**Cruz Roja Española**



**TRAINING AND ADVICE TO OTHER  
COMMUNITY SOCIAL AGENTS**

Teachers, health staff.

Cada vez más cerca de las personas



**Cruz Roja Española**

**CHILEAN RED CROSS VOLUNTEERS  
TRAINING IN PSYCHOSOCIAL BASIC  
SUPPORT**

Training

Real intervention on the field.

Cada vez más cerca de las personas



**Cruz Roja Española**

**FACILITATORS TRAINING IN  
PSYCHOSOCIAL SUPPORT  
(IRCF STANDARDS)**

Four days of intensive training in Santiago.

Cada vez más cerca de las personas



**Cruz Roja Española**

**INTERVENTION DERIVATED FROM  
HEALTH BASIC CARE UNIT**

In the camp of Hualañé..

Cada vez más cerca de las personas



**Cruz Roja Española**

## INDIVIDUAL INTERVENTIONS

Although the biggest part of the job was comunitarian, the team worked also on one-to-one interventions.

Cada vez más cerca de las personas



Cruz Roja Española

## INFORMATION/DIFUSSION MATERIAL: SELF-CARE AND PROTECTION AGAINST EARTHQUAKE AND TSUNAMI

Cada vez más cerca de las personas



Cruz Roja Española

## FINAL COMMUNITY MEETING

Cada vez más cerca de las personas



Cruz Roja Española

## PROJECT EVOLUTION

After one month the psychosocial team came back to Spain.

The Chilean Red Cross employed staff to continue the project.

Cada vez más cerca de las personas



Cruz Roja Española



**Thank you very much!**

Cada vez más cerca de las personas



**Cruz Roja Española**

Humanidad  
Imparcialidad  
Neutralidad  
Independencia  
Voluntariado  
Unidad  
Universalidad



**Cruz Roja Española**

[www.cruzroja.es](http://www.cruzroja.es) 902 22 22 92