



Psychosocial Centre

 International Federation
of Red Cross and Red Crescent Societies



Psychosocial Centre

 International Federation
of Red Cross and Red Crescent Societies

Longterm projects, alternative
approaches and lessons learned


ENPS
Vienna 2010

The Seven Principles

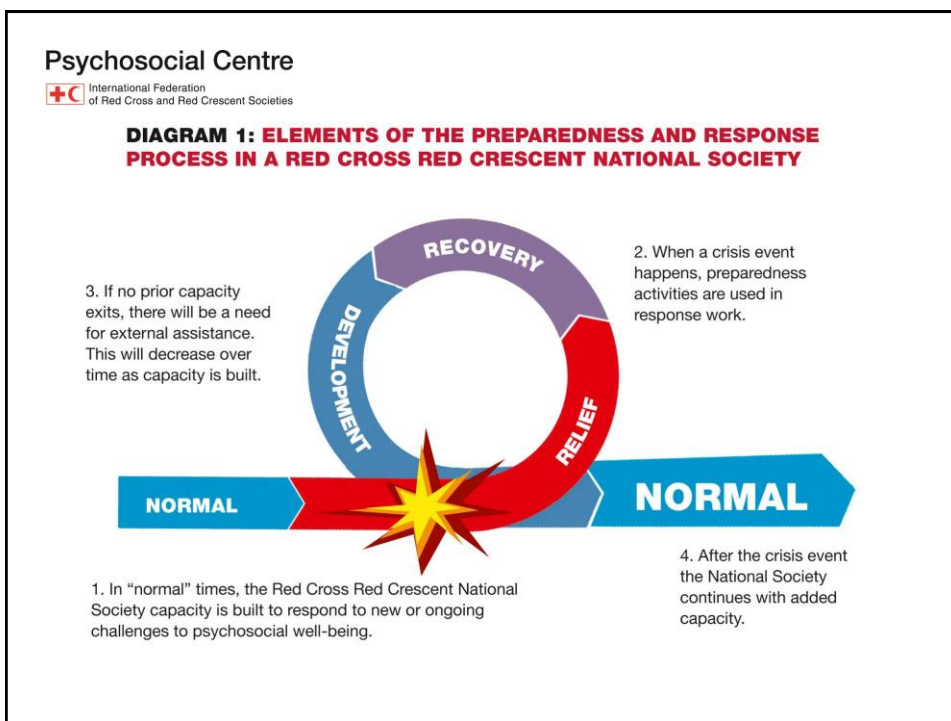
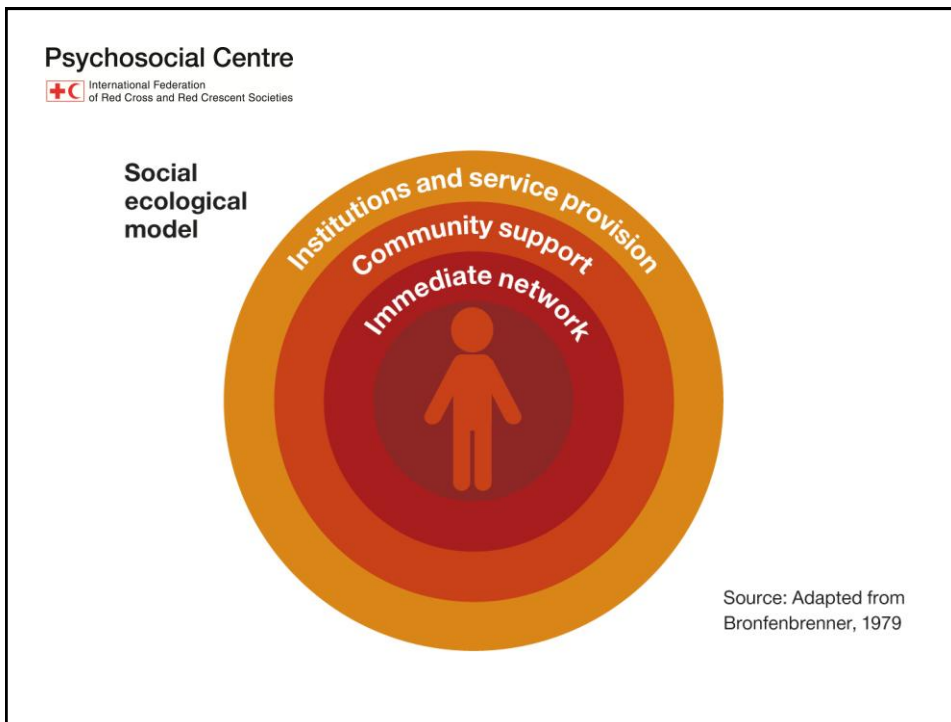
- Humanity
- Impartiality
- Neutrality
- Independence
- Voluntarism
- Unity
- Universality

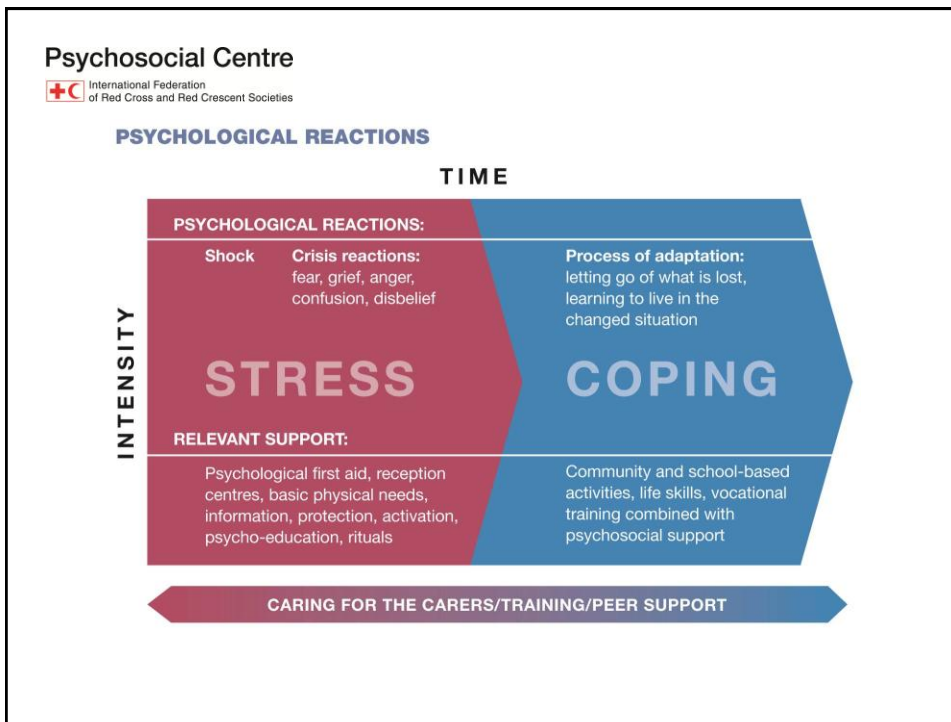


Psychosocial Centre


 International Federation
of Red Cross and Red Crescent Societies

- Overwhelming evidence of research shows that adequate social support is major protective factor after trauma
- Other protective factors: Sense of control, taking care of self and community, positive view (may stem from a sense of belonging, sense of coherence)
- Important to facilitate volunteers support and peer support system (active social networks and mutual support)

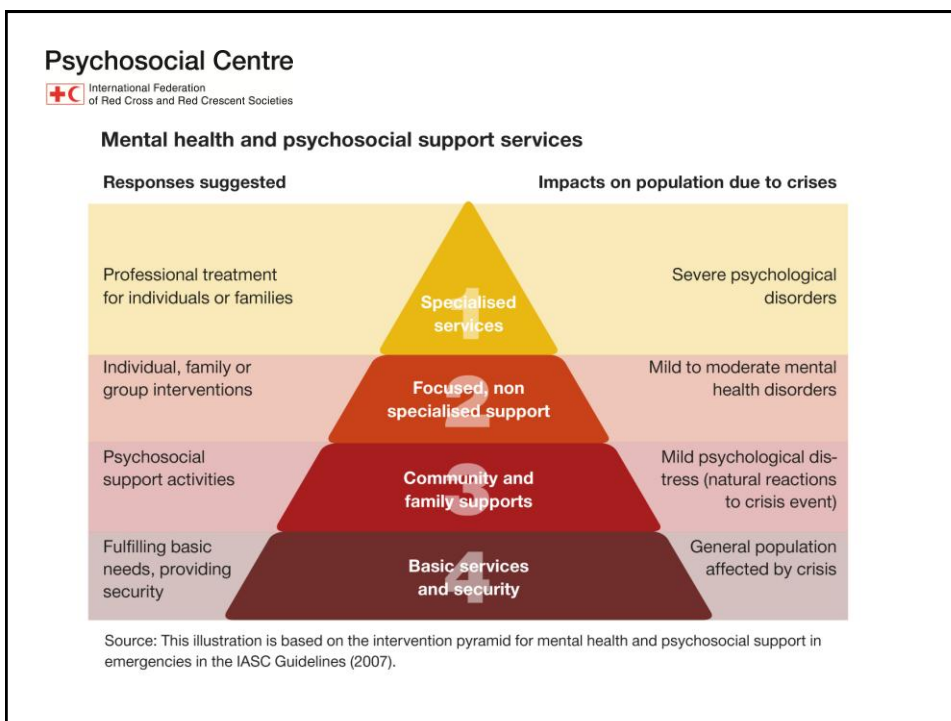
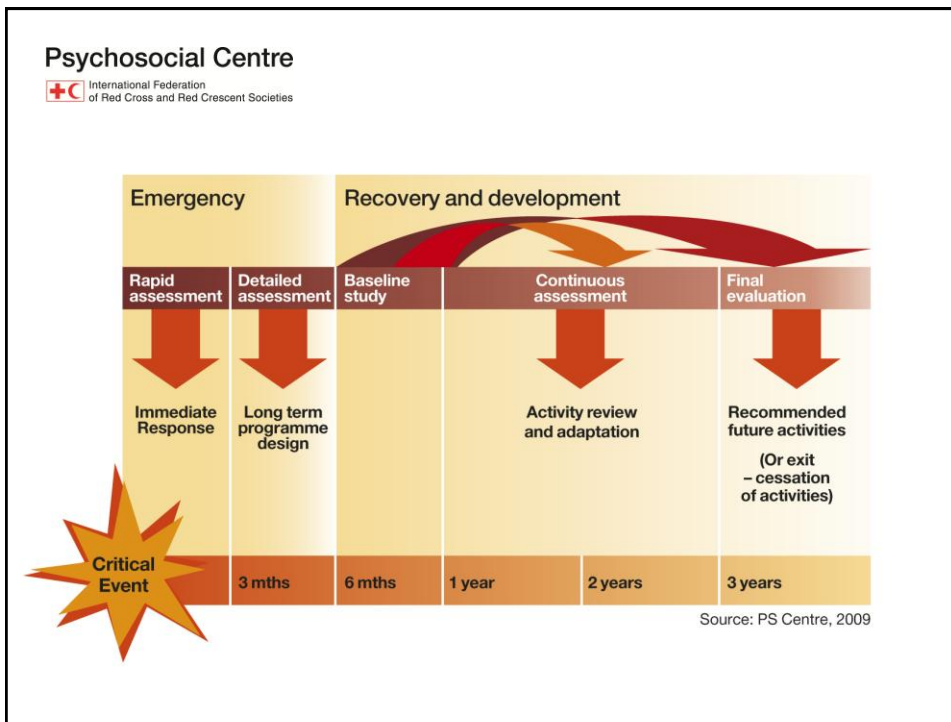




Psychosocial Centre
 International Federation of Red Cross and Red Crescent Societies

Emergency		Recovery – long term			
Immediate response	Long term program design	ACTIVITY PLANNING Regular review and adaptation according to findings of ongoing monitoring and evaluation			
Root shock	Realization	RECOVERY PHASES Acknowledgement		Adaptation	
ACTIVITY EXAMPLES Psychological First Aid Need and resource mapping Drama activities		Support groups Home visits		Youth clubs Drama activities Regular play groups with children Memorial activities	
 Critical Event	3 mths	6 mths	1 year	2 years	3 years

Source: PS Centre, 2009



Strategic aim 1: Save lives, protect livelihoods, and strengthen recovery from disasters and crisis

- PSS can help reduce the impact of disasters and crisis and promote faster and 'better' recovery ...

Strategic aim 2: Enable healthy and safe living

- PSS can help to strengthen community resilience
- PSS can help enhance treatment benefits for the most vulnerable through an integrated health system
- PSS can reduce the risk of disasters by promoting psychosocial attitudes that favours a 'culture of safety'

Strategic aim 3: Promote social inclusion and a culture of non-violence and peace

- PSS can help promote intercultural dialogue and harmony within and between communities
- PSS can influence attitudes towards violence